



**LION**<sup>®</sup>  
ready for action

# FIRE TRAINER

|||||

[ USER'S MANUAL

ORIGINAL  
USER'S MANUAL

Version 1.5  
28/11/19



## Contents

1	About the Fire Trainer	2
2	How to operate the Fire Trainer	3
3	Technical specifications	4
4	Usage	5
5	Maintenance	6
6	Warranty	7
7	Recommendations and warnings	8

## 1 About the Fire Trainer

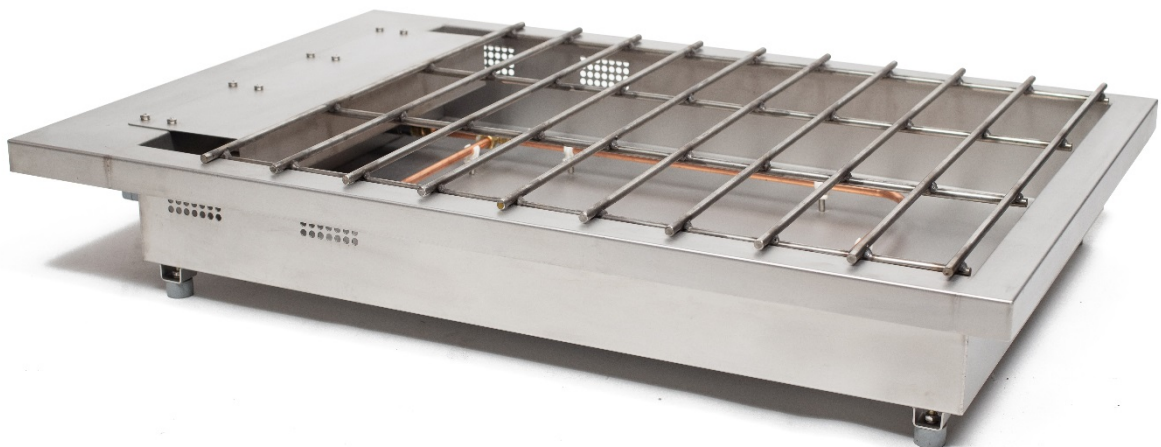
The Fire Trainer has been developed to practise and train with the use of small fire extinguishers and water hoses to extinguish a simulated liquid fire.

The Fire Trainer uses propane gas. The gas is led through a magnetic barrier to the pilot burner. The fire trainer is ignited by means of an electric spark-ignition. Service is effectuated with just one button, controlling both magnetic barrier as ignition.

The Fire Trainer can be used inside a room, however, it is recommended to use the Fire Trainer in an open-air environment. When using the Fire Trainer inside a room, one must make sure that there is sufficient ventilation available. One also must take into account that minor soot formation is possible.

Do not put any inflammable materials around the Fire Trainer, as they might ignite, because the fire trainer produces an open fire.

The Fire Trainer is **NOT** meant to be used as a heater.



## 2 How to operate the Fire Trainer

Before using, the burn-pith must be positioned as horizontal and flat as possible. Then the burn-pit is to be filled with water up to the openings on the sides of the tray.

When extinguishing with powder, it is advisable to fill the tray with **solid material** like gravel on top of the waterlevel.

These openings also serve as transport facilities for eventual remaining gases in the tray after extinguishing, in order to avoid spontaneous re-ignition of these gases. An extra safety precaution therefore.

In case of wind, place the tray with the connection-side into the wind.

The fire trainer is to be connected to a propane gas bottle with a variable reduction of **1,5 bar maximum**. The propane gas is led to the burner in the tray filled with water by means of of a magnetic barrier.

Then the remote control and the electrical conduction (adapter, or optionally a connecting cable for the use of a battery) are to be connected. In order to ensure water tightness of the connectors, they must be screwed in tightly. After plugging in of the adapter the Fire Trainer is ready for use.

Any desired extinguisher can be used to extinguish the burner. However, various extinguishers can have a negative influence on the operation of the ignition. This should be considered during practice. (see "Use")

Close the control box connectors with the cover caps attached after use and cleaning.

### 3 Technical specifications

Dimensions Fire Trainer:	length	45.7 inch	(116 cm)
	width	31.5 inch	(80 cm)
	depth	7.9 inch	(20 cm)
Dimensions inside tray:	length	39 inch	(99 cm)
	width	27.6 inch	(70 cm)
	depth	5.5 inch	(14 cm)
Weight:	49.6 lbs.		(22,5 kg)
Material:	Stainless Steel		
Gas type:	Propane gas		
Connection:	Hose pillar	0.3 inch	(8 mm)
	(Quick coupling optional)		
Maximum gas pressure:	1,5 bar		
Gas use at max. pressure:	3.2 ounce/minute		
Power (maximum):	150 kW		
Electrical connection:	12 V-DC (-1, +2V)		
Absolved current at 12 V:	1 A		
Fuse:	1,6 A – T		
Degrees of Protection:			



Electrical units tray:	IP54
splashwater tight	
Adapter "FT Solid"	IP66
Control	IP52
Power supply type	12V-2A
"FT-Solid" (unstabilized)	

## 4 Usage

The Fire Trainer is simple to use: after connection, press the button on the control box. The gas valve will then open and the ignition mechanism will be activated. The tank should ignite and the thermocouple must be warmed within the ignition time of approx. 12 seconds. If this is not the case, the gas valve will close automatically. After approximately 5 seconds, the apparatus can be started up again.

Extinguishing can begin once the Fire Trainer is lit. After extinguishing (and then disengaging the control button), you should wait for the thermocouple to cool down before starting it up again. This can take up to about 30 seconds. If you press the control button before the thermocouple has cooled, the LED on the control box will flash with a frequency of about 0.5 seconds to indicate this.

If the LED on the control box flashes fast without you having pressed the control button, this indicates an electrical fault. In that case, the Fire Trainer cannot be operated. If the flashing LED does not stop by itself, the circuit can be reset by disconnecting the power supply for a moment. If the fault remains, this means there is a defect requiring repair.

The Fire Trainer can be extinguished with all common extinguishing agents. When using foam, you should take into account the fact that the ignition electrode may become polluted, as a result of which it may not work for a short time. You should clean this electrode with water and/or a sponge. In any case, the tank, electrode and connection cables/connectors should be cleaned thoroughly following an exercise in order to prevent corrosion. **Extinguishing with powder reduces the working life of the Fire Trainer.**

**Preferably, do not extinguish in the direction of the ignition electrodes.**

## 5 Maintenance

The sturdy design of the Fire Trainer is made of stainless steel and bronze parts.

The following maintenance is recommended after each use:

- Do not drop the Fire Trainer.
- Avoid rough treatment.
- Check the gas tube inside the Fire Trainer for obstruction caused by foam or powder and keep the openings clear.
- Clean the pilot burner, igniter and gas tube of the Fire Trainer after approx. three training sessions for trouble free operation.
- Clean the Fire Trainer immediately after use with any kind of house hold cleaner or soap solution to avoid clogging.

## 6 Warranty

LION are guaranteed trouble free when used according to operating instructions and maintenance rules.

LION will replace any part in case the malfunction is caused by manufacturing or material defects within six (6) months after date of purchasing.

Any proof of maintenance failure or damage caused by rough treatment will relieve LION of any claim whatsoever.

In case of damage or a breakdown in which has been established that the (maintenance) instructions have not been followed, or, that the damage or breakdown are a direct result of inexperienced use and/or rough treatment, dismisses LION of any claim.



## 7 Recommendations and warnings

We recommend keeping the propane cylinder at a min. distance of 7 meter (7.66 yards) away from the Fire Trainer. The gasbottle must be at reach at all times because the tap of the gasbottle serves as a safety barrier.

We recommend checking the connections for leaks and a well-functioning connection on a regular basis. The gastube is to be properly attached by using high-quality tube-clamps.

Continuous maximum extraction of the available gas is not possible from a standard gasbottle because of the required evaporationwarmth. When using lower volumes or capacity you can restrict yourself to the use of only one bottle.

Under no circumstances should a person bend over the Fire Trainer, whether during ignition, during the exercise or even when the Fire Trainer is simply connected up.

Always be aware of the possibility of re-ignition of the remaining gas coming from the watertray after the Fire Trainer has been extinguished. We recommend not to light the Fire Trainer again immediately after extinguishing.

Wait a couple of minutes before re-igniting the Fire Trainer for its next use.

**Warning: The tray and the water in it are getting hot during and after use.**

**We advise you NOT to use the Fire Trainer inside a room.**

**Do not use the Fire Trainer in windy weather conditions.**

Be cautious when using the Fire Trainer in a confined space as there is always the possibility of spreading unburnt propane gas within the space. Propane gas will sink to the floor as it is heavier than air, and, can create a risk of explosions under certain conditions. Therefore, the confined space should be well ventilated.

The supplied adaptor for 12 V-DC power supply type "FT-Solid" is watertight. Regularly check that the enclosure is not damaged!

The remote controls are not watertight but can withstand a few incidental drops. The electrical control units on the Fire Trainer is splashproof. Do not submerge these items.



## **LION Protects B.V.**

Industrieweg 5  
5111 ND Baarle-Nassau  
the Netherlands  
T: +31 (0)13 507 6800  
F: +31 (0)13 507 6808  
E: [infoEMEA@lionprotects.com](mailto:infoEMEA@lionprotects.com)

[WWW.LIONPROTECTS.COM](http://WWW.LIONPROTECTS.COM)

---

Version 1.5  
28/11/19

© LION Group, Inc. All rights reserved.